



# CFMS NEWSLETTER



## PRESIDENTS MESSAGE

By John Martin

It is now time to start thinking of next year and all the things that will be available to do and accomplish, starting with the CFMS annual business meeting in Visalia, Ca. It is almost here and this is where you as members of CFMS through you Federation Representatives shape the future of the California Federation. So, Please send you Federation Representative to Visalia to learn about the future activities and elect and meet the Executive Committee for 2017. See you there.

The 2017 AFMS/CFMS Convention and Show planning process is well underway and the all preliminary indications are that it is going to be a very good show. Information on the convention can be found on the CFMS Website ([www.cfmsinc.org](http://www.cfmsinc.org)). Packets will be distributed at the annual business meeting in Visalia to your Club/Society's Federation Representative. Check with them for the information. The 2017 show will be the very first show to include the newly approved classification of competitive Meteorite. So, all of you Meteorite Collectors get your collections ready for display. (Rule J in the Uniform Rules) The new rules will be available on the AFMS and CFMS websites by January 2017. The AFMS Show will not be back on the west coast for another seven years, so here is your chance to show the rest of the country your Lapidary and Jewelry Arts skills.

Recreational Rockhounding on your Public Lands is still in jeopardy in many areas of California and Nevada. More land is being withdrawn from public recreational use, more regulations are being imposed and more possible National Monuments are in the proposal process whether by legislation or by executive order. In order to keep recreational Rockhounding as a viable recognized

recreational activity, you, the Rockhounds of CFMS, must take a proactive position in the Public Land Management Process whether through legislation or Land Management decision at the "Bed Rock" (That is Grass Root level for Rockhounds) level. For more information on how to make a difference you can contact Al Bolshazy PLAC-North [abnreno@sbcglobal.net](mailto:abnreno@sbcglobal.net), Lisbet Thoresen PLAC-South [editor@sdmg.org](mailto:editor@sdmg.org) or John Martin CFMS PLAC Committee chair [plac@antelecom.net](mailto:plac@antelecom.net).

Have a Happy Thanksgiving and a safe Thanksgiving field trip!

*John Martin*

### On the Inside

Mark Your Calendar.....	2
CFMS Insurance & Website Contacts. ....	2
Donations. ....	2
Exhibit Cases Wanted. ....	2
CFMS Fall Business Meeting.....	3
CFMS Scholarship Committee.....	3
2016 CFMS Scholarship Honorees. ....	4
2016 CFMS Scholarship Students. ....	5
CFMS Scholarship Honoree Thank You. ...	5
Adopt A Highway Program. ....	6
Visual Programs.....	6
Rules Committee. ....	7
CFMS 2016 Website Contest.....	7
ESS Camp. ....	8
From the Nominating Committee.....	8
Caution When Renting Vehicles. ....	8
Rockhound Soapbox. ....	9
PLAC-South. ....	9-10
PLAC-North. ....	11
Show Dates.....	12-13





### CFMS FALL BUSINESS MEETING

By Pat LaRue

The annual Fall Business Meeting and election of 2017 Officers will be held November 11-13, 2016 at the Wyndham-Visalia, off Hwy 198 in Visalia, CA. For those who have not been to this location in the past, take Hwy 198 exit east from Hwy 99. You will see the hotel located just south of the first off ramp past the airport.

Room reservations can be made by phone at (559) 651-5000. To receive the special CFMS rate of \$89 per night, tell them you are with CFMS. Cut-off date for this price is **November 7, 2016**. The first night's deposit or guarantee by credit card must accompany your reservation. Do not make reservations through the website; call them directly.

An informal **Cracker Barrel** will be held **Friday** evening at **7:30 p.m.** As in the past, hotel policy forbids our bringing snack foods to any of the meetings. The **Business Meeting** will be called to order on Saturday, **November 12 at 9 a.m.** President-elect Margaret Kolaczyk will have a brief meeting of her 2017 committee chairpersons on Sunday a.m., time to be announced.

#### Banquet Menu

Steak Au Poivre

Seared 10 oz New York Steak Coated with a Crushed Peppercorn Crust Brandy Reduction

-or-

Pacific Salmon

Charbroiled Pacific Salmon filet

Roasted Shrimp Sauce, White Wine Cream Reduction

Mixed Greens Salad

Seasonal Vegetables

Garlic Mashed Potatoes

Dinner Rolls and Butter

Banana Cream Pie with Chocolate Shavings

\$42 tax and gratuity included.

Vegetarian and gluten free options available upon request.

**Make banquet reservations by November 7, 2016.**

Mail your check payable to CFMS to:

CFMS  
PO Box 1657  
Rialto, CA 92377-1657



### CFMS SCHOLARSHIP COMMITTEE

by Jennifer Haley, Chair

So far this year, we have not received any nominations for Honorees. I know there are very deserving members who have made an exceptional difference in making your society as wonderful as it is, and individuals who may or may not be society members who have made great contributions towards the purpose and goals of the CFMS.

**Selection of a Honoree-**The person(s) selected to be honored shall have made great contributions towards the realization of the avowed purpose and goals of the CFMS. The honoree may receive this award only once. The Honoree shall select the school(s) at the college or university level within the territorial jurisdiction of the CFMS which will receive the Scholarship Grants and shall participate with the schools in selection of the student awardee(s).

**History of the CFMS Scholarship Fund-** In 1977, the California Federation of Mineralogical Societies, with the assistance of its Federation Directors and the support of its member Societies, decided to initiate a scholarship program. As the AFMS program was designed to assist students in graduate work in the field of Earth Science, the CFMS Scholarship was established to help undergraduate students in their junior and senior years in Earth Science studies.

Scholarships are awarded using only the interest from the fund which has grown. Thanks to the generous contributions made by Member Societies as well as individuals, scholarships are awarded each year. On behalf of all of the CFMS societies and individuals who have made generous contributions to the CFMS Scholarship Fund, *Thank you.*



## 2016 CFMS Scholarship Honoree Merryan O'Neill

On behalf of the members of the El Dorado County Mineral & Gem Society, the nomination of Merryan O'Neill is recognized as one of this year's CFMS Scholarship Honorees. For two decades, Merryan has been an extremely active and supportive member of the El Dorado County Mineral & Gem Society, contributing to the success of the society, the CO-OP and the Federation in countless ways.

Merryan has many accomplishments. She's served on her society's Board of Directors, including the Presidency in 1998. She created the Glyphy Awards that are presented each December to members of her Society who have contributed articles in support of their newsletter, and forwarding worthy contributions to the CFMS and AFMS Bulletin Editors competitions. She's been her Society's Webmaster, Historian and Publicity Committee Chairperson, the Chairperson of her Society's annual Rock & Gem Show (for which she also created the Coats For Kids project), and led field trips for members of her Society.

She is a perpetual exhibitor at her Society's annual Rock and Gem Shows, county fairs, public library and other rockhound venues. She is an award-winning editor of her society's newsletter, Petroglyphs, having earned 'top honors' from the California Federation as well as the American Federation. In addition to her many contributions to the success of the El Dorado County Mineral & Gem society, Merryan has served as Webmaster of the Field Trip Chairman's Association (aka: the CO-OP) website. She has been instrumental in the development of the Editors and Webmasters Breakfasts, which are held in conjunction with the CFMS Annual Shows & Conventions. She is the current CFMS Webmaster and Chairperson of the CFMS Internet Committee, also serving as chairperson of the CFMS Website Contest.

In 2014, Merryan was the recipient of the prestigious Golden Bear Award presented by the CFMS in recognition of all of her contributions to the Federation.

On behalf of the CFMS Scholarship Committee and the members of the El Dorado County Mineral & Gem Society, *Congratulations Merryan O'Neill.*

## 2016 CFMS Scholarship Honoree Randy Harris

On behalf of the members of the Santa Clara Gem & Mineral Society, the nomination of Randy Harris is recognized as one of this year's CFMS Scholarship Honorees. Randy has been a member of this society for 13 years. From the beginning of his membership, Randy has been an active member at many levels. He has been a member of the executive board for at least the past 10 years and President. He runs the meetings (both general and board meetings) very well and his attendance record is very impressive. At the meetings, he is very good about meeting guests, being available to members for them to address any concerns they might have or just to "talk rocks."

What very few people notice is that Randy is also one of the last to leave meetings, making sure the room is cleaned up properly and leaving the meeting room in the proper condition. Members who have spent time with Randy in the field, can personally attest to both his skill and generosity on field trips. He is willing to spend time to help beginners, and has never shied away from hard work. Randy has also opened his home to the club, for board meetings and as a place to teach. He has run a study group called "Cutaways" for a few years now, opening up his home and workshop to help teach members the lapidary arts. When it comes to their annual festival, there are few people who work as hard as Randy. For the past several years he has taken on the thankless job of Dealer Chair, and has performed the job with integrity. In addition to that, he has worked very closely with all of the other chairs for the show, helping to arrange the layout and being one of those incredibly valuable people at set up, who "Knows what's going on"! He is a very hard worker and rarely seems to tire. As our senior members have gotten older and are less able to participate as they used to, Randy's energy and effort have been invaluable.

On behalf of the CFMS Scholarship Committee, & the members of the Santa Clara Valley Gem & Mineral Society, *Congratulations Randy Harris.*

## CFMS SCHOLARSHIP

2016 Scholarship Student–Steven Claar

Steven Claar is a student at California State University, Sacramento, majoring in Geology. He will be a senior during the 2016-2017 academic school year, and intends to graduate spring 2017 with a B.S. degree. This summer he began work on his senior thesis with Dr. Steven Skinner of the Geology Department. His focus of research will involve collecting metamorphic roof pendants in Bodega Bay, and sending thin sections to Arizona Geochronology Center for detrital zircon analysis.

The objective of this project is to determine the tectonic relationship between the Bodega and Salinas Block. In measuring detrital zircon age spectra of metamorphic roof pendants, he will advance our understanding of the tectonic development of the Pacific margin and constrain the paleogeographic location of the Bodega Block.

After Steven finishes his undergraduate education at California State University, Sacramento, he intends to further his education and research at graduate school. He is very interested in sedimentology, geomorphology, and surficial processes.

Steven was recognized as an outstanding junior for the 2015-2016 school year. He has been elected as Geology Club Secretary and cannot wait to help organize and make this year's Rock Auction another success. As secretary, he would like to provide as much support as possible to his fellow officers as well as providing detailed minutes of every meeting, and allow access to them by club members in the form of a public document.

On behalf of the CFMS we wish Steven our very best for a very bright future.

He's working hard to receive a B.S. in Geology. Shortly after, he plans on heading to Carlsbad, California, to study at the Gemological Institute of America. It's his dream to travel the globe in search of the best mineral specimens that the earth has to offer.

---

## CFMS 2015-2016 SCHOLARSHIP

By Merryan O'Neill, Honoree

Over the years, I've been impressed when university upper class geology students have received CFMS scholarships. However, I did not observe that the Honorees received an award.

Please excuse my "duh" moment when it was announced at the year's Banquet that I was receiving an award as an Honoree. I had truly felt rewarded by the process, and it did not even occur to me that I should receive any further recognition. What a surprise when I was called upon to come up and receive a beautiful plaque. I can't remember exactly what I mumbled, but I hope that the message of "thank you" did come through.

I was so pleased to have worked with California State University, Sacramento's Geology Department to find such a deserving student for one of this year's CFMS Scholarships. Steven Caar is an exceptional student and plans to graduate in the spring of 2017 with a B.S. degree. He intends to further his education and research at graduate school. His primary interests are in sedimentology, geomorphology, and surficial processes.

I want to thank my society, the El Dorado County Mineral & Gem Society, for submitting my name to CFMS as a 2015-2016 CFMS Scholarship Fund Honoree and Louisa Carey and Jennifer Haley, CFMS Scholarship Committee, for their assistance.

---

## CFMS SCHOLARSHIP

2016 Scholarship Student–Henry Wempe

Henry is a student at San Jose University. Ever since he can remember, he has always wondered why things are the way they are. Mineralogy and collecting mineral specimens brings out that very special moment of questioning...wondering what, when, where, why and how.





## CALTRANS ADOPT-A-HIGHWAY PROGRAM

By Wayne Mills, Orcutt Mineral Society (Adopt –A-Highway Coordinator)

I was stunned at the September 2016 CFMS Director’s Meeting in Placerville, when I asked how many societies participated in the Caltrans Adopt-A-Highway program, and no-body raised their hands. Our society has been cleaning our 2-mile stretch of Highway 166 East (of Route 101) for at least 12-years.

Caltrans has 12 Districts that cover all 58 of California’s Counties. Therefore, each District covers several Counties. For example, District 5 (where I worked for 25 years), includes Santa Cruz, San Benito, Monterey, San Luis Obispo and Santa Barbara Counties. According to a 2010 study, there are 394, 608 lane miles of highway in California. (One mile of 6-lane highway would contain 6 lane miles). The average traffic on a typical California highway is 11,520 to 51,773 vehicles per day. That makes for a lot of opportunities for highways to get dirty. To help combat the trash that inconsiderate motorists consciously (or not) deposit on our highways, and to help conserve their limited maintenance resources, Caltrans developed the Adopt-A-Highway program in 1989, making California the 20<sup>th</sup> State to participate in the program.

The requirements for group participation are simple: Nominate an Adopt-A-Highway Coordinator, attend a brief training session about highway safety, collect the needed vests, hats, “pickers” and bags from your contact at Caltrans (each District has their own Adopt-A-Highway program coordinator, often associated with their maintenance department). Inform your coordinator 5 days before you plan to do your clean-up. You will be issued a permit, copies of which are supposed to be displayed when you do your clean-up (once each two months). Once per year, Caltrans hosts their Annual California Clean-up Day when they request a report of the number of folks who participated in the (September) Clean-up, how many bags of trash you collected, how many bags of (recyclable cans and plastic bottles) you collected, and what other interesting things you found.

**Why would you want to participate in this program?** Many of you must have seen the signs along many highways declaring that such and such a business or individual is responsible for cleaning up this section of highway. Good advertising and public

relations, right? **Several rock and Mineral Societies’ involvement in the program could be another reason for the BLM to be generous to us over collecting rights on Public Lands).** Another thing is that you never know what you might find. We have found interesting rocks, videos, credit cards, dollar bills (on our last clean-up one of our members found a \$50.00!!), tools, bolts, clothes and “trucker bombs” (if you don’t know what those are, you’ll find out if you decide to participate. I didn’t say that everything you find is cool...you learn to be discrete about what you pick up and how you do it.

You can find out more about the program at the following website:

<http://www.dot.ca.gov/maintenance/adopt-a-highway/index.html>

The AAH Brochure is at: [http://www.dot.ca.gov/hq/maint/adopt/AAH Program Brochure\\_02-26-16\\_v2.pdf](http://www.dot.ca.gov/hq/maint/adopt/AAH_Program_Brochure_02-26-16_v2.pdf)

You can contact the program coordinator for your county at:

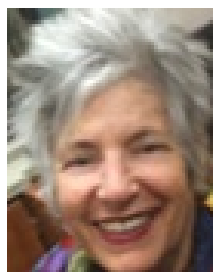
<http://www.dot.ca.gov/hq/maint/adopt/coordinators.htm>

I designed a bottle-cap “pin” to signify participation in the AAHP. As far as I know, none of our participants ever made one. Details are in the **November 2007 Orcutt’s** (“OMS Highway Pin-up”). Find it at [omsinc.org/Archives](http://omsinc.org/Archives).

---

## VISUAL PROGRAMS

By Sharon Rogow



Well, requests have picked up a bit with 3 in September. Hopefully, there will be more for October and November. Additional DVDs will soon be listed on the web site including subjects such as volcanos, stone setting, sphere making, garnets, fossils, Kentucky Agates (a new one), electroforming and lost wax casting.

If you want a specific subject but do not see it yet on the site, call me. I will also be happy to make recommendations. Reminder: the rental fee is \$10.00. Some of you are still sending \$7.50 which is the old, outdated fee. Those who have done this should send the additional \$2.50 to me. This is both a service for member societies and a fundraiser for CFMS.

Sharon Rogow: (702) 499-0272 [sharonrr@cox.net](mailto:sharonrr@cox.net)

## RULES COMMITTEE

By Cheri George, Chairman

We were very fortunate at the 2016 CFMS Show to have great people helping us arrange the cases. Thanks go to Gene and Priscilla Bilyeu from the El Dorado club for their hard work and assistance. In the beginning we went in with 20 competitors, and after 2 withdrawals and 1 disqualification we ended up with 17. We awarded 12 trophies and met some very nice people. We want to thank you all for entering, and remember if you placed above 90 as a Master, you eligible to Enter directly into AFMS at next years CFMS/AFMS Show in Ventura. The competitive application will have a block to check for exactly that purpose.

### CFMS Competition Winners from the 2016 CFMS Show, Placerville, CA

<u>NAME</u>	<u>CLUB</u>	<u>GROUP</u>	<u>DIV/CLS</u>	<u>TITLE</u>
Alan Metzger	Reno	M	A-8	Petrified Wood Specimens- one locality
Rhonda Hanson	Reno	M	G10	Cabochons
Tony Charlton	El Dorado	M	BU-11XY	Gp 2 Minerals from one Mine
Tony Charlton	El Dorado	M	BU-9Y	Minerals from One Location- County
Kris Hansen	Reno	Adv	CC-5	Cabochons Traditional
Kyle Mills	Reno	Jr	EGC-4	Educational- Fossil Sharks Teeth
Mary Love	Reno	M	D-10	Jewelry- w/wo stones
James Seifert	Reno	M	A2	Lapidary
Barbara Hartman	Reno	M	CC-1	Cabochons- Modern
Diane Cook	Ventura	M	EGC-4	Educational- Shades of Pink
John Cook	Ventura	M	C-3	Cabochons- One Location
Josephine Snead	Reno	M	CA-1	Carving

M= Master; Adv= Advanced; Jr= Junior

### CFMS 2016 WEB SITE CONTEST

Merryan O'Neill, Chair

We are proud to announce the following results of the 2016 Web Site Contest.

- 1<sup>st</sup> Kendra Johns Santa Rosa Mineral & Gem Society  
\*Web Site: SRMGS.org
- 2<sup>nd</sup> Terry Wilson Ventura Gem & Mineral Society  
\*\*Web Site: vgms.org
- 3<sup>rd</sup> Lora Haller Feather River Lapidary & Mineral Society  
\*\*\*Web Site: featherriverrocks.org
- 4<sup>th</sup> Mark Nelson Pasadena Lapidary Society  
Web Site: pasadenalapidarysociety.org

The top 2 CFMS placements were forwarded to compete in the AFMS Web Site Contest. Here are the results of the AFMS WEB SITE CONTEST (announced at September AFMS/NFMS Show).

\*Placed 1<sup>st</sup> in 2015 AFMS Contest, therefore, not eligible in 2016

\*\*Placed 3<sup>rd</sup> in the AFMS Contest

\*\*\*Placed 8<sup>th</sup> in the AFMS Contest

I've reviewed quite a few CFMS society web sites that I believe should be in the competition. I do hope to see them entered in the 2017 Contest. The 2017 forms will be posted soon, and I've left the 2016 forms online so they can be reviewed (go to [www.cfmsinc.org](http://www.cfmsinc.org) - click on "Forms"). With the information I have at this time, there will probably not be any changes. If there are, they will be minor. I'll keep you advised.



### E.S.S. CAMP

By Marion Roberts, Chair

Hello to all,

Here is a update to what is going on with the E.S.S. I can tell you that even with a slightly less than successful camp as far as attendance at Camp Paradise this year, we still had a great group of people the first week, but was short on the second week. Hopeftly it will correct it self for next year. The amount of successful projects was really great to see, which was coming from a participating group that was approximately 30 percent first time attendees. That is my goal for each session, to get new people introduced to all aspects of the lapidary arts. It was great working with Al Bolshazy as our new camp manager, as it took a lot of the load off of my plate. Thank you AL. Also to be given a big hand in the pre camp work are Margaret Kaloczyk and my wife Vivien Roberts. My hats off to you both.

I was pleased to find that the representative for the church, Victor is still going to be my contact person as we have developed a very good working environment and he has been responsible for quite a few improvements at the camp. All of this even with a major shake up in the congregation management, keep your fingers crossed.

I have just confirmed our dates of August 26<sup>th</sup> thru September 9<sup>th</sup>, 2017 as our rental dates for Camp Paradise, so the first week classes start on August 28<sup>th</sup> with registration on the August 27<sup>th</sup>. The second week starts on September 4<sup>th</sup> with registration on September 3, 2017.

Zzyzx Camp is on the horizon so get your spot right away, but not before November 1<sup>st</sup>. The Registration form is on the C.F.M.S. web site. The dates for Zzyzx are March 27<sup>th</sup> thru April 1, 2017 with registration on March 26<sup>th</sup>. I look forward to seeing a full camp of ambitious friends and new friends.



### FROM THE NOMINATING COMMITTEE

By Marion Roberts, Chair

Due to some unforeseen circumstances including two late resignations coming at a time, including the Placerville show and my assuming the Chairmanship unexpectedly we do apologize for the delay in this report and recommendation. The Nomination Committee has selected as a recommended slate of officers for the 2017 term including;

- |                                |                   |
|--------------------------------|-------------------|
| President                      | Margaret Kolaczyk |
| 1 <sup>st</sup> Vice President | Jennifer Hailey   |
| 2 <sup>nd</sup> Vice President | Anthony Fender    |
| Secretary                      | Marcia Goetz      |
| Treasure                       | Albert Bolshazy   |

As Chairman for the Nominating Committee, and with concurrence of all members I submit to you this recommended slate of nominees.



### CAUTION WHEN RENTING VEHICLES

By Fred Ott, Insurance Chair

From time-to-time, a Society may find the need to rent a vehicle such as a car or truck to help in an activity such as moving equipment and supplies. The Federation's General Liability Insurance policy includes a benefit called **Non-Owned and Hired Car Liability** coverage which protects the Society and its members against claims and lawsuits because of an at-fault accident as stated in the policy. In order to provide coverage, the vehicle must be **rented by the Society** and **not rented in the name of an individual Society member.**

Several years ago, a CFMS society arranged to have a truck rented by a Society member who, unfortunately, did not own his own vehicle. When the truck was involved in an accident, neither the Society nor the individual had any liability insurance coverage to provide a legal defense or pay for the damages caused by the accident involving the truck. Had the Society rented the truck, the CFMS Insurance policy would have covered the accident. Had the individual owned a vehicle that was insured with non-owned auto coverage (as almost all car insurance policies automatically provide), he would have been covered for the accident by his own insurance company.

Bottom line: Accidents do happen. Make sure your Society has property coverage as well as adequate liability limits when vehicles are being used or rented for Society activities.





## ROCKHOUND SOAP BOX

Public Lands Advisory Committee  
John Martin CFMS PLAC Committee  
Chair  
[plac@antelecom.net](mailto:plac@antelecom.net)

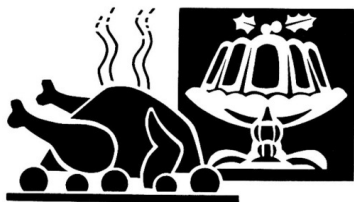
Next year the fulfillment of the California Federation of Mineralogical Societies – Public Lands Advisory Committee will be complete. As of November of 2016 the PLAC committee will finally be a complete working committee. As per the By-Laws there is a single PLAC Committee Chair. However with the size of the CFMS region one person can not effectively cover the Land Use Issues of the entire area. With the concurrence of the Executive Committee two Sub-Committee positions have been created, one PLAC North Sub-Committee covering North and parts of Central California and most of Nevada and a PLAC South Sub-Committee Chair Covering the area east of the Sierra Nevada Mountain Range and the Southern California Deserts and Forests.

Al Bolshazy of Reno, Nevada will be the PLAC-North Sub-committee chair and is well suited to represent the area and will keep CFMS informed on what the Land Use Issues and will attempt to answer any questions or concerns on the Northern CFMS Region Public Lands. Al can be contacted at [abnreno@sbcglobal.net](mailto:abnreno@sbcglobal.net)

Lisbet Thoresen of San Diego, California is the CFMS PLAC-South Sub-Committee Chair and will be responsible for the Southern Region of CFMS and keeping us informed on Public Land use issues in the Southern CFMS areas. Lisbet can be contacted at [editor@sdmg.org](mailto:editor@sdmg.org)

If there is any questions, concerns or issues I can be contacted at [plac@antelecom.net](mailto:plac@antelecom.net) and will attempt to answer and resolve any land use issues.

**“Happy Rockhounding and Enjoy Your Public Lands”**



**Happy Thanksgiving**

## CFMS PLAC –South

By Lisbet Thoresen  
[editor@sdmg.org](mailto:editor@sdmg.org)

### DRECP update The Phase I signing ceremony

On September 14, 2016, the final Land Use Plan Amendment (LUPA) was approved for Phase I of the DRECP. The Record of Decision was signed by Karen Douglas, Commissioner of the California Energy Commission; Jerome Perez, Director of California BLM; and Sally Jewell, Secretary of the Interior. The signing ceremony was held at the visitor center of the Santa Rosa and San Jacinto Mountains National Monument, with ca. 150 attendees present. Not many Rockhounds showed up and few DAC members did, either. I attended and had the opportunity to meet Secretary Jewell. I used it to mention that the CFMS represents 108 affiliate clubs and its 8,747 recreational rockhound members. I reminded her that Senator Dianne Feinstein had sent her a letter on May 12th advocating the accommodation of rockhounding in the Mojave Trails National Monument, adding that our community hoped she would consider adopting the senator’s recommendation in the Management Plan for every National Monument as a matter of policy. I stressed that, as adherents of the AFMS code of Ethics, rockhounding values are consistent with – not in conflict with – the conservation values enshrined in the NM designation.

### **Why is the DRECP Phase I ROD important, how did it come about, and what did it net Rockhounds?**

Given the scope and long gestation of the DRECP, the signing ceremony was a historic milestone. Developed over eight years beginning in the administration of Governor Arnold Swarzenegger and accelerated under Governor Jerry Brown, the DRECP is the most ambitious land use amendment in California state history. It will serve as a “guideline” for administering 22.5 million acres of public and non-federal lands in California’s deserts. Its goal is to meet 50% of the state’s projected energy needs from renewable energy sources by 2030. Utility-scale projects will be built through public-private partnerships.

Five alternative plans were considered in the 8,000+-page document – none considered a distributed energy generation (e.g., rooftop solar) component. By the time the comment period closed on February 23, 2015, 11 public hearing had been convened and more than

16,000 comment letters had been received. Because the draft DRECP received very strong criticism, it was decided to roll it out in phases.

The Phase I DRECP LUPA covers 10.8 million acres of BLM-administered lands, of which 5 million acres previously had been designated conservation areas (e.g., National Monuments, wildlife allocations, etc). According to the executive summary for the ROD, the BLM LUPA “identifies priority areas for renewable energy development while setting aside millions of acres for conservation and outdoor recreation.” Of special interest to Rockhounds, the final BLM LUPA was revised from the draft version, changing DFA designated areas where they overlapped rock collecting areas. According to Vicki Campbell, BLM’s **DRECP Project Manager**, **these changes were made in response to the “numerous and detailed comment letters” the DRECP received from rockhound advocates.** See map 1 and 2 at the hyperlinks below.

[Map 1:](#)

[http://www.amlands.org/media/DIR\\_83012/DIR\\_224034/DIR\\_476767/be6ebb86db1b7859ffff817dfff907.jpg](http://www.amlands.org/media/DIR_83012/DIR_224034/DIR_476767/be6ebb86db1b7859ffff817dfff907.jpg)

[Map 2:](#)

[http://www.amlands.org/media/DIR\\_83012/DIR\\_224034/DIR\\_476767/be6ebb86db1b7859ffff817efff907.jpg](http://www.amlands.org/media/DIR_83012/DIR_224034/DIR_476767/be6ebb86db1b7859ffff817efff907.jpg)

Among the many individuals and groups that submitted comment letters, San Diego Mineral & Gem Society submitted a 48-page letter that included comments from more than 185 respondents to a rockhound survey it sponsored from 12/14 to 2/15. Kudos to Rockhounds who took the time to write letters, take the survey, and attend the public meetings – your effort made a difference! Thanks also to non-Rockhounds who lent our community their support, particularly Desert District Advisory Council (DAC) member Randy Banis and conservation blogger Shaun Gonzales.

### **Mojave Trails National Monument (MTNM) Management Plan**

As many Rockhounds are aware by now, during the interim period while a Management Plan is being drafted for the MTNM, state BLM Director Jerry Perez authorized rock collecting to continue as previously within the Monument. The BLM officially inaugurated the planning process by hosting three “Envisioning

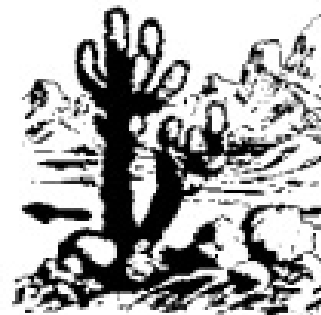
Sessions” in Barstow, Yucca Valley, and Needles, on August 30th, 31st, and September 1st, respectively. The events featured posters showcasing different special interests, with presenters available to discuss them. The sessions also provided opportunity for the public to provide written input about what should go into the Management Plan. Many questionnaires were returned with copious comments.

The Barstow meeting had an overflow crowd, with 30–40 rockhounds attending from as far away as San Diego and Chatsworth. BLM field officer Mike Ahren was asked how long the drafting process might take – he estimated 18–24 months for completion of the Management Plan. To ensure that collecting areas and vehicular access to them will be incorporated into the final LUPA, Rockhounds will need to submit detailed comment letters citing specific collecting areas and travelways to reach them. Places and trails and roads not specifically included in the Final Plan will be off limits ever after.

Many favorite collecting areas are now within the Monument’s boundaries, including Afton Canyon, Cady Mountains, Cadiz (Siam Siding), most of Lavic Siding, Jasper Hill and other localities. Because there are so many collecting areas and roads and trails, Rockhounds should not wait to gather information for their letters, but instead, should start working on them now and have them ready to submit when the official comment period opens. The window of opportunity to submit comment letters will be brief.

The Hyperlink below will discuss this topic and specific suggestions on what to include in an effective comment letter. [Rock Collecting on Public Lands in Southern California](#) (PDF)

[http://www.amlands.org/media/DIR\\_83012/DIR\\_224034/DIR\\_476767/be6ebb86db1b7859ffff817cffff907.pdf](http://www.amlands.org/media/DIR_83012/DIR_224034/DIR_476767/be6ebb86db1b7859ffff817cffff907.pdf)



## PLAC NORTH

Northern California and Nevada  
By Al Bolshazy - CFMS PLAC–North  
[abnreno@sbcglobal.net](mailto:abnreno@sbcglobal.net)

This is a summary of activities in Northern California and Nevada over the last several months:

**FIRES.** Fires in northern California and northeast Nevada have been devastating. Due to the drought and lightning activity there has been more than a half a dozen major fires in both states. Unfortunately the fires especially in northeast Nevada have decimated the sage grouse habitat. Also suffering from the fire are the wild animals and horses. The only silver lining I can find is that this might be a good time to check out these areas for finding new rock hounding areas.

**DREDGING.** Unfortunately there's been no final decision on dredging and California. Although Judge Ochoa cited California saying state law cannot supersede federal law, he has sent both sides to come to an agreement on how dredging should be administered. California is now in the process of turning the issue, water, over to the water authority. The water authority was not involved in the lawsuit and we don't know the outcome of this move if in fact it does take place.

**MINING DISTRICTS.** There is a movement to re-create mining districts in California. In the past money districts controlled all activities within their districts. The state government did not have control over the districts. The miners within the districts elected the leaders and the leaders governed the district without input from the state government.

**NATIONAL MONUMENTS.** The use of the Antiquities Act by Pres. Obama is out of control. He has made one new National Monument in 2015 and four new monuments in 2016 and is preparing to declare a new National Monument in Nevada as well as extending the area in several National Monuments. He wants to extend the California Coastal National Monument by 6700 acres. Unfortunately our Senators and Congressmen are sidestepping Congress and going directly to Pres. Obama and having him use the Antiquities Act to create National Monuments. The problem with National Monuments is that unless recreational rock hounding is written into the management plan, you cannot even remove a pebble from a National Monument. John Martin has worked diligently to keep recreational rock hounding written

into the management plan for the four National Monuments in the Southern California desert.

**SAGE GROUSE.** Sage Grouse are not listed as endangered by Sally Jewell, Department of the Interior. She has applauded local governmental agencies and the private sector for maintaining and increasing the habitat for the Sage Grouse. However, there is a threat to their habitat by the wildfires. This could result in closing thousands of acres to "protect" the Sage Grouse. These closures will affect everyone from mining to ranching as well as closing recreational area and roads leading to these areas.



**MORE LAND FOR THE NAVY--Fallon Nevada.** The Navy wants to expand their range for flight training and bombing range to approximately 673,593 acres withdrawing these acres from the public lands. I feel very confident this is going to happen. Unfortunately when this does, you and I will not be able to enter these areas. Any claims, rock hounding areas along with recreational areas will all be closed.

**ENVIRONMENTAL PROTECTION AGENCY.** The EPA will put the Anaconda Copper mine located in Lyon County, Nevada on their priority list for their Superfund to get the mine cleaned up. Hopefully, they will do better than they did last time.

The above is the highlights. We need to be very vigilant and contact our representatives and express our dismay at the use of the Antiquities Act along with the removal of millions of acres from public lands. One Congressman sympathetic to our cause is Mark Amodei. You can email him by going to his website, [www.amodei.house.gov](http://www.amodei.house.gov) and I request you do so after reading the above.

Not all news is bad news. The BLM is providing emergency water and feed for the horses and northeast Nevada due to the fires and drought which have dried up the water and and left very little food to sustain the herds.

Be safe and good rock hounding.

**SEE YOU IN VISALIA!!**

## CFMS SHOW DATES

*Shows and Events  
sponsored by  
CFMS Clubs & Societies!*

*Please submit your  
Show or Event information **THREE**  
MONTHS prior to your show*

*Email or mail to:  
SHOW DATES  
Or use the Online Show Form  
at [www.cfmsinc.org](http://www.cfmsinc.org)  
(click on Shows)*

*You should receive a confirmation  
within 5 days after submitting your  
Show Date information!*

## 2016

### November 5 – 6: ANAHEIM, CA

American Opal Society  
Business Expo Center  
1960 S. Anaheim Way  
Hours: Sat 10 -6 Sun 10 -5  
Contact: Veronica Pupura (714) 509-9959  
E-Mail: [info@opalsociety.org](mailto:info@opalsociety.org)  
Website: [www.opalsociety.org](http://www.opalsociety.org)

### November 5 – 6: RIDGECREST, CA

Indian Wells Gem & Mineral Society  
Desert Empire Fairgrounds  
520 South Richmond eim  
Hours: 9 – 5 Daily  
Contact: John DeRosa (760) 375-7905  
E-Mail: [jfrocks@dslextreme.com](mailto:jfrocks@dslextreme.com)

### November 5 – 6: SAN DIEGO, CA

San Diego Mineral & Gem Society  
Al Bahr Shrine Center  
5440 Kearny Mesa Blvd  
Hours: Sat 9:30 – 5:00, Sun: 10:00 – 4:00  
Contact: Bob Hancock (619) 889-6886  
E-Mail: [rtourmaline2@aol.com](mailto:rtourmaline2@aol.com)  
Website: [www.sdmg.org](http://www.sdmg.org)

### November 12 – 13: SACRAMENTO

Sacramento Mineral Society  
Scottish Rite Temple  
6151 H Street  
Hours: Sat 10 -5 Daily  
Contact: Alyssa Mesiznger (916) 662-5819  
Email: [webadmin@sacramentomineralsoc.org](mailto:webadmin@sacramentomineralsoc.org)  
Website: <http://sacramentomineralsociety.org>

### November 12 – 13: YUBA CITY, CA

Sutter Buttes Gem & Mintamral Society  
Yuba-Sutter Fairgrounds  
442 Franklin Avenue – Franklin Hall  
Hours: Sat 10 – 5, Sun 10 -4  
Contact: Karen Horita  
E-Mail: [horita@comcast.com](mailto:horita@comcast.com)  
Website: [www.sutterbuttes.net](http://www.sutterbuttes.net)

### November 19 – 20: OXNARD, CA

Oxnard Gem & Mineral Society  
Oxnard Performing Arts Cen ter  
800 Hobson Way  
Hours: Sat. 10 -5; Sun. 10 – 4  
Contact: Diane Cook, (805) 647-8517  
E-Mail: [johndianedaisy@yahoo.com](mailto:johndianedaisy@yahoo.com)  
Website: [www.oxnardgem.com](http://www.oxnardgem.com)

### November 11 – 13: RENO, NV

Artisan Craft Fair–Sponsored by Reno  
GMS  
Reno Town Hall  
Corner Pickham & S. Virginia  
Hours: Fri 10 – 5 Sat 10 – 5 Sun 10 -3  
Website: [www.renorockhounds.com](http://www.renorockhounds.com)

### December 3 – 4; BARSTOW, CA

Mojave Dessert Gem & Mineral Society  
Cora Harper Community Center  
841 S. Barstow Road  
Hours: 10 – 5 Daily  
Contact: Danny Watts (760) 373-1309  
E-Mail: [dvwatts@msn.com](mailto:dvwatts@msn.com)  
Website: [www.mdgms.net](http://www.mdgms.net)

## 2017

### January 21 – 22: EXETER, CA

Tule Gem & Mineral Society, Visalia  
Exeter Veteran's Memrorial Building  
324 N. Kaweah Avenue  
Hours: Sat 10 – 5 Sun 10 – 4  
Contact: Laura Manser (539) 303-0632  
E-Mail: [ldriggs5@gmail.com](mailto:ldriggs5@gmail.com)  
Website: [www.tulegem.co](http://www.tulegem.co)

### February 17 - 26: INDIO, CA

San Gorgonio Mineral & Gem Society  
Riverside County Fair & National Date  
Festival  
82-503 Highway 111  
Hours: 10 – 10 Daily  
Contact: Bert Grisham (915) 849-1674  
E-Mail: [bert67@verizon.net](mailto:bert67@verizon.net)

### February 18 -19; ANTIOCH, CA

Antioch gem Club  
Contra Costa County Fairgrounds  
1201 West 10<sup>th</sup> Street  
Hours: 10 – 5 Daily  
Contact: Brenda Miguil (925) 301-6957  
E-Mail: [brenda.miguel@yahoo.com](mailto:brenda.miguel@yahoo.com)  
Website: [www.antiochlapidaryclub.com](http://www.antiochlapidaryclub.com)

### February 25 -26; VALLEJO, CA

Vallejo Gem & Mineral Society  
Solano County Fairgrounds, McCormack  
Hall  
900 Fairgrounds Drive  
Hours: 10 – 5 Daily  
Contact: Dan Wolke, 707-334-2950  
E-Mail: [dnewolke@sbcglobal.net](mailto:dnewolke@sbcglobal.net)  
Website: [www.vigems.org](http://www.vigems.org)

### March 11 – 12: SAN MARINO, CA

Pasadena Lapidary Society  
San Marino Masonic Center  
3130 Huntington Drive  
Hours: Sat 10 – 6, Sun 10 – 5  
Contact: Cathy Miller (510) 305-4196  
E-Mail: [pasadenalapidary@aol.com](mailto:pasadenalapidary@aol.com)  
Website [www.pasadenalapidarysociety.org](http://www.pasadenalapidarysociety.org)  
[Show page](#)

### March 11 – 12: NEWARK, CA

Mineral & Gem Society of Castro Valley  
Newark Pavillion  
6430 Thornton Avenue  
Hours: Fri & Sat 10 – 6, Sun 10 – 5  
Contact: Cathy Miller (510) 305-4196  
E-Mail: [showchair@mgscv.org](mailto:showchair@mgscv.org)  
Website: [www.mgscv.org](http://www.mgscv.org)

### March 4 – 5: ARCADIA, CA

Monrovia Rockhound  
L. A. County Arboretum & Botanical Garden  
301 North Baldwin Avenue  
Hours: 9:00ch – 4:30 daily  
Contact: Jo Anna Ritchey (626) 359-1624  
E-Mail: [joannaritchey@gmail.com](mailto:joannaritchey@gmail.com)  
Website: [www.Moroks.com](http://www.Moroks.com)

**March 4 – 5: VENTURA, CA**

Ventura Gem & Mineral Society  
Ventura County Fairgrounds  
10 W. Harbor Boulevard  
Hours: Sat 10 – 5; Sun 10 – 4  
Contact: Terry Wilson (805) 312-8467  
E-Mail: [info@vgms.org](mailto:info@vgms.org)  
Website: [www.vgms.org](http://www.vgms.org)

**March 11 – 12: SPRECKELS, CA**

Salinas Valley Rock & Gem Club  
Spreckels Veteran's Hall  
5<sup>th</sup> & Llano Streets  
Hours: 10 -5 Daily  
Contact: Gary Beck (813) 679-2896  
E-Mail: [garybeckpca@yahoo.com](mailto:garybeckpca@yahoo.com)  
Website: <http://salinasrockandgem.pagecloud.com>  
[Show Page](#)

**March 25 – 26: ROSEVILLE, CA**

Roseville Rock Rollers Gem & Mineral Society  
Placer County Fair Fgrounds  
800 All American City Blvd (Off Washington)  
Hours: Sat 10 – 5; Sun 10 – 4  
Contact: Gloria Marie (916) 216-1114  
E-Mail: [gloriarosevillerockrollers@gmail.com](mailto:gloriarosevillerockrollers@gmail.com)  
Website: [www.rockrollers.com](http://www.rockrollers.com) [Show page](#)

**April 1 – 2: CHICO, CA.**

Paradise Gem & Mineral Society Paradise  
Sulver Dollar Fairgrounds  
2357 Fair Street  
Hours: Sat 9 – 5; Sun 10 – 4  
Contact: Kevin Wright (530) 990-0211  
E-Mail: [agatecorca@netcom.com](mailto:agatecorca@netcom.com)  
Website: <http://pgmclub.wix.com/paridise-gem-and-mineral-club>

**April 8 - 9: MARIPOSA, CA.**

Mariposa Gem & Mineral Society  
Mariposa County Fairgrounds  
5007 Firhrounds Road (South of Mariposa on Hwy 49)  
Hours: Sat 10 – 6 Sun 10 – 4  
Contact: Merrdith Meehan  
(559) 868-3535  
E-Mail: [mgmc@sti.net](mailto:mgmc@sti.net)  
Website: [www.camineralmuseum.com](http://www.camineralmuseum.com)

**DON'T FORGET TO UP-  
DATE YOUR CLUB  
WEBSITE WITH YOUR  
NEW SHOW DATE**

**REMINDER**

**Advertise your Show in as many  
Free locations as possible!  
Local Newspapers  
current events sections! Local  
TV  
stations community  
calendars!  
Other Local Shows**

**Be sure to advertise your shows in  
the *Rock & Gem Magazine!***

**[www.rockngem.com/  
showdate-submissions/](http://www.rockngem.com/showdate-submissions/)**

***Send the information in early so  
it's published in  
the magazine as well as online.***

**YOUR CLUB/SOCIETY SHOW  
SHOULD BE LISTED HERE**



**CFMS Newsletter**  
PO Box 1657  
Rialto, CA 92377-1657

Pat LaRue, Editor

Return Service Requested

Non-Profit Org  
US Postage  
PAID  
San Bernardino, CA  
Permit No 1290