

# CFMS NEWSLETTER

XLIX #1

JANUARY 2011



## PRESIDENT'S MESSAGE

### CFMS 2011: The Year of the Child

Happy New Year! I am very honored to be your Federation President for 2011, and I promise to work diligently throughout the year to further the goals of the CFMS. At our change-over meeting in Visalia, we enumerated several priorities for the coming year. A big one is updating key CFMS documents and getting them all digitized: our By-Laws, Operating Regulations, Officer & Committee Manual, and the roster of local society Directors. We also need to build on the email communication list and Yahoo list begun by Fred and CJ to enhance opportunity for timely communication to all local societies. (If your society is not on either of those lists, let us know!) I also want to encourage all Committee Chairs—not just the usual suspects—to submit articles throughout the year to this very newsletter to inform local societies about how your committee is benefiting them and the actions you are taking. (Committee Chairs: consider yourselves encouraged!) We hope to initiate a “Welcome & Orientation” session for new Directors coming to a CFMS meeting for the first time, as well as old Directors still seeking a firm footing on what our doings are all about. And, of course, we wish to continue with land access alerts and with devising ever better ways to educate local societies and members about these issues in a timely fashion.

The big, personal goal I've set for myself is expressed in my presidential theme: “The Year of the Child.” I view this as a direct extension of Fred's theme of “Grow the Federation” because one sure way to grow is by encouraging and helping along the next generation and cultivating an interest in our hobby at a young age. In keeping with this, I not only announced my Year of the Child theme at the Directors' Meeting in Visalia, I also decided on the spot to award a special Outstanding Junior Exhibit prize for the best junior display (whether competitive or noncompetitive) entered into our CFMS Show & Convention this May in Anderson. Details are

spelled out elsewhere in this month's newsletter as an addendum to the 2011 CFMS Supplementary Rules. In short, I'll be acknowledging a junior exhibitor under the age of 18 with a framed certificate, a \$200 cash prize from my personal checkbook, and a fossil, mineral, or lapidary specimen from my personal collection. I encourage one and all to consider awarding a similar prize at your own local show and to make special efforts throughout 2011 to make your society kid-friendly in ways that will hook children's interest and make them want to come back, not just next month or to the next show, but for a lifetime to come!

*Jim Brace-Thompson*

### ON THE INSIDE

Contact Information	2
CFMS Calendar	2
All American Club	3
Rules Announcement	4
Exhibitors Seminar	4
Got Badges?	4
Outstanding Junior Exhibit Award	5
Junior Activities	5
Bulletin Aids	6
Where is it Now?	6
Sad News	6
CFMS Web Site Contest	7
Wiley's Well Recap	7
Kramer Junction	8
Safety	8
CFMS Shows & Events	9-10
Bylaws Update	insert
Officers & Chairmen Roster	insert
Zyzzx Application	insert

**NEWSLETTER SUBSCRIPTIONS**

The CFMS Newsletter is published eleven (11) times a year by the California Federation of Mineralogical Societies, Inc., PO Box 1657, Rialto, CA 92377-1657. Subscription: \$5.50 per year, Jan. through Dec. Not prorated.

**CFMS WEBSITE**

CFMS is accessible at [www.cfmsinc.org](http://www.cfmsinc.org). Web Master is Merryan O'Neill. Editors are invited to download articles for their bulletins from this website.

**EXECUTIVE SECRETARY/TREASURER**

Pat LaRue  
PO Box 1657  
Rialto, CA 92377-1657  
(909) 874-5664 (909) 874-7430 fax  
Email: [bplarue@earthlink.net](mailto:bplarue@earthlink.net)

**TO REPORT A CLAIM:** Report claims as soon as possible to Patt McDaniel at 1 (800) 400-7288. If no one is immediately available, and/or during non-business and weekend hours, call 1 (800) 252-4670.

**CFMS INSURANCE CONTACT:**

McDaniel Insurance Services, Inc.  
PO Box 1294  
Ojai, CA 93024  
(805) 646-9948 or (800) 400-7288  
(805) 646-9976 Fax  
Email: [mcins@west.net](mailto:mcins@west.net)

Bud McMillin, Insurance Chair  
1717 Oakdale Rd., Suite O  
Modesto, CA 95355  
(209) 527-8000 work  
Email: [bud.mcmillin.b7yj.@statefarm.com](mailto:bud.mcmillin.b7yj.@statefarm.com)

**ARTICLES FOR YOUR NEWSLETTER DUE TO EDITOR BY 5th OF MONTH:**

Pat La Rue, Editor  
P.O. Box 1657  
Rialto, CA 92377-1657  
Email: [bplarue@earthlink.net](mailto:bplarue@earthlink.net)

**CFMS CALENDAR**

Feb 28 All American entries due  
Mar 27 -  
Apr 3 Zyzxx Earth Science Seminar  
May 13-15 CFMS Convention & Show

Officers and Committees: send me event dates and due dates to include in this section.

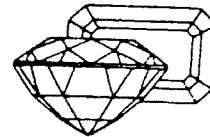
**ANYTIME**

Send donations for CFMS Scholarship Fund to:  
Pat LaRue  
PO Box 1657  
Rialto, CA 92377-1657

Send donations for AFMS Scholarship Fund to:  
Betty Pankey  
4310 Kingsly Drive  
Pittsburg, CA 94565-6267

Send donations for CFMS Endowment Fund to:  
Pat LaRue  
PO Box 1657  
Rialto, CA 92377-1657

Send donations for AFMS Endowment Fund to:  
Pat LaRue  
PO Box 1657  
Rialto, CA 92377-1657



## 2011 CFMS Show and Convention

### Field Trips and Scenic Venues

By Fred Thomas

Make your plans now to attend the 2011 CFMS Show and Convention, May 13-15, 2011 in beautiful Northern California; hosted this year by the Superior California Gem and Mineral Association (Superior Cal), [www.superiorcal.com](http://www.superiorcal.com). The Show will be held for the first time in decades in a region well known to rock hounds for sites of gemstones with the familiar names of Stony Creek jasper-agate, Davis Creek obsidian, and Happy Camp jade. The region offers spectacular views and visiting opportunities within easy distance of the Convention held at the Shasta County Fairgrounds in Anderson, including scenic Mount Shasta, Castle Crags, and California's most recent volcano, Lassen Peak.

Superior Cal is planning a Guided-Tour of the Shasta Gem and Mineral Club's club house and "in operation" workshop just three miles from the Fairgrounds. The Workshop is a model of what many a club would like to have in order to promote lapidary expertise and learning. Shasta Gem is a co-member of Superior Cal along with co-member, Paradise Gem and Mineral Club, Inc.

Additionally Superior Cal has planned seven (7) regional Self-Guided Tours that Show participants and visitors can visit at their leisure before, during, and after the Show. The list of Self-Guided Tours includes the Turtle Bay Museum and the Sundial Bridge located within the city of Redding, the Weaverville Museum just 30 miles west in the historic mining town of Weaverville, and Lassen Volcanic Park just 40 miles east of Redding.

Rock hounds will especially want to schedule to time to visit Gaumer's of Red Bluff Inc's Lapidary Museum and Jewelry Store just 15 miles south of the Show, [www.gaumers.com](http://www.gaumers.com). Gaumer's offers a premier lapidary museum, rough rocks, jewelry, and lapidary supplies. Another exciting attraction for rock hounds and geologists is a visit to Shasta Caverns reached by a ferryboat ride across scenic Shasta Lake. The well operated Caverns, [www.shastacaverns.com](http://www.shastacaverns.com), are always fascinating and can be a cooling experience particularly if the weather should turn hot. For those Show visitors travelling north, the last of our Self-Guided tours is the excellent Crater Rock Museum, , [www.craterrock.com](http://www.craterrock.com), located in right on Interstate 5 in Central Point, Oregon.

So make your plans now to come to the 2011 CFMS Show and Convention and be sure to take the time to enjoy **ALL** of Northern California's Treasures.



## ALL AMERICAN REPORT

By Dot Beachler, Chairman

At the recent CFMS meeting in Visalia it was decided that the All American Program should continue. This program allows clubs to not only keep a history of all club activities for the past year, but it could show areas that could be enhanced.

In the past it has been suggested that a committee could collect this data quickly. A historian could collect a group of members to help; a vice-president to report on programs, field trip director to report on club trips, show chairman for a report on the club show, an activities chairman to report on not only activities in the club but activities in the community.

Each club operates in it's own way. Perhaps these few suggestions might help a new club to look at the All American Program and enter a book this year.

Our due date for all books is February 28, 2011 Our due date for all books is February 28, 2011.

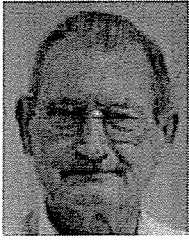
## SCHOLARSHIP COMMITTEE

By Jo Anna Ritchey, Chairman

The Scholarship Committee met in Visalia and selected the following couple and the 2011 CFMS Scholarship Honoree. This couple was nominated by the Santa Cruz Mineral and Gem Society.

Bob and Sallee Bumbraugh have been members of the Santa Cruz Mineral and Gem Society for 20+ years. Bob, a degreed geologist from UCLA and rocket scientist, has served as President, Show Chair, Show Dealer Chair, Field Trips Chair, and other positions for the Society. Sallee was our bulletin editor for 13+ years, as well as Assistant Show Chair, and many other behind the scenes jobs which have no title. Bob & Sallee have put in exhibits at our annual shows and at shows for other clubs. Bob has often visited local schools and colleges to give presentations related to Geology and the Lapidary Arts. Bob & Sallee have always been very open and inviting to have visitors over to their house to talk all about their extensive collection. For all that they have done throughout the years, Santa Cruz Mineral and Gem Society would like to nominate Bob & Sallee Bumbraugh for the 2011 CFMS Scholarship Honoree.

This is the **ONLY** Honoree for 2011 because no other club sent in a nomination! Future bulletins will detail the process for submitting nominations.



**IMPORTANT  
ANNOUNCEMENT  
AFMS RULES 2011**

By Dee Holland

**Competitive Exhibitors and judges,  
please note the following  
information:**

There were a lot of changes in the AFMS Rules, especially the first section, it was completely rewritten and approved by the AFMS Uniform Rules Committee at La Habra in June, 2010. There were changes in all Divisions, be they corrections, or additions.

So, if you are planning on **competitively exhibiting at Anderson in May, 2011** you're going to have to download your Division and with it Section I. (approximately 16 pages). This is to be done after Jan 10, 2011.

**For judges, I suggest you download the complete set of changes, which is 96 pages long.** This can be accomplished **after Jan 10, 2011**, at [amfed.org](http://amfed.org) then go to AFMS Rules.

Dee Holland, CFMS Rules Chair  
[beauholland@centurytel.net](mailto:beauholland@centurytel.net) and  
[shirleyleeson@cox.net](mailto:shirleyleeson@cox.net)

**AFMS UNIFORM RULES**

**Third Annual Exhibits Seminar at VGMS Show**

By Jim Brace-Thompson

For the third year running, Dee Holland and Shirley Leeson have been invited to come to the annual show of the Ventura Gem & Mineral Society to offer pointers on exhibiting competitively. They'll then move into the display area to provide gentle critiques of display cases for anyone seeking helpful suggestions. Dee is in charge of the Uniform Rules Committee for competitive exhibits and welcomes the opportunity to share insights and to field questions. If you've ever been interested in exhibiting competitively at a CFMS show but haven't made the leap, here's an opportunity to get expert advice in a friendly, nonthreatening environment. The tips they and Marion Roberts gave last year directly resulted in a large number exhibits from several Southern California societies earning trophies at the 2010 AFMS/CFMS show in La Habra. Our 2011 CFMS

show takes place May 13-15 in Anderson, and this informal seminar can help put the final shine on your exhibit. The tips you get from Dee and Shirley will also assist in entering displays into competition for your local county fair. And even if you never want to enter any competition at all, their tips will still prove helpful in putting together attractive and effective displays for your own local show.

We encourage and invite members of CFMS societies from far and near to come to the Ventura show and participate in this seminar. The show takes place at the **Ventura County Fairgrounds, 10 W. Harbor Blvd., Ventura, CA**, on March 5-6, with the seminar starting **1:00 PM, Sunday, March 6**. If you wish to exhibit at the show for the purpose of getting your display evaluated, contact me not later than February 15 (805-659-3577; [jbraceth@roadrunner.com](mailto:jbraceth@roadrunner.com), and I'll arrange for space. We hope to see you there! Even if you don't put in an exhibit yourself, we invite you to listen in on the evaluations and pick up handy tips and valuable suggestions. If you can't make it to Ventura, Dee and the other members of the Uniform Rules Committee are on-call to help. If planning to enter competition in Anderson this year, please don't hesitate to contact them regarding your exhibit, which division and class to enter, and anything else you might feel concerned about. They're there to help!

**CFMS CHAIRS & COMMITTEE  
MEMBERS**

**Got Badges?**

At the November Directors' Meeting in Visalia, we distributed name plates and swingers to committee chairs and committee members for 2011. If you have not received yours, please contact me at (805) 659-3577, [jbraceth@roadrunner.com](mailto:jbraceth@roadrunner.com) and I'll get it on its way to you.

Jim